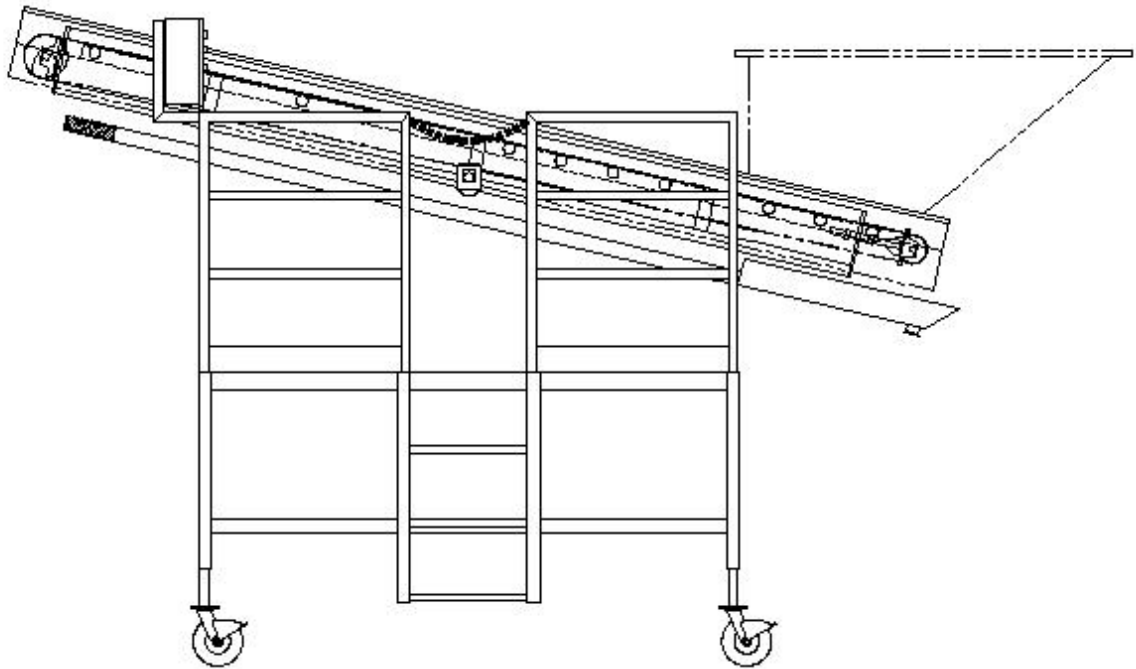
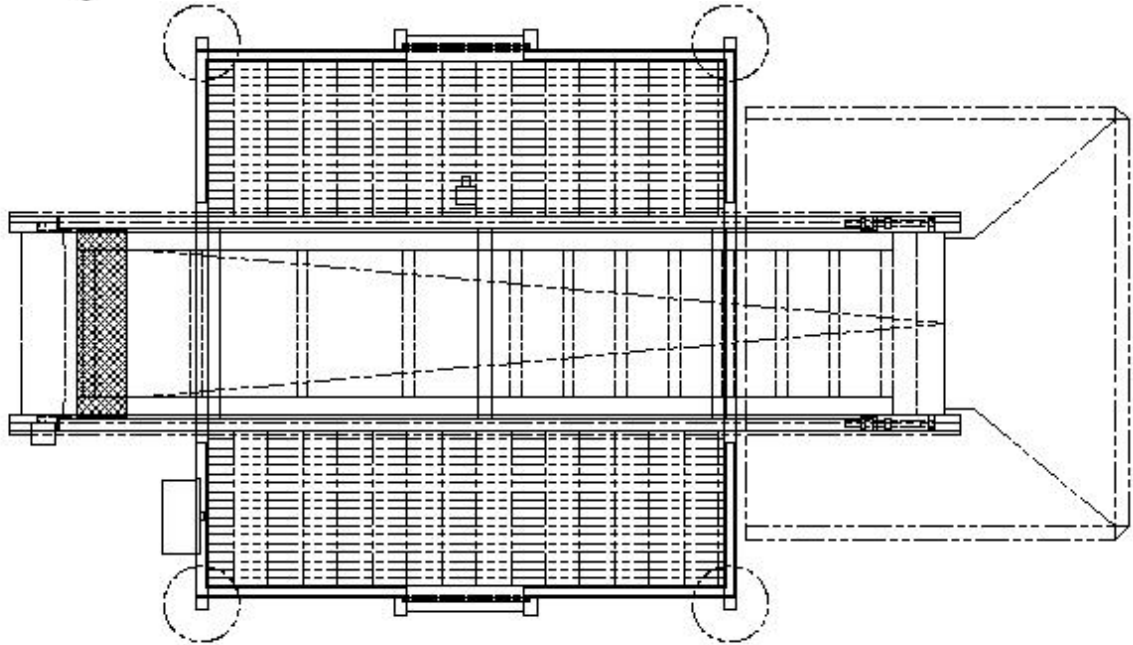




P&L SPECIALTIES

MANUFACTURING THE FINEST STAINLESS STEEL EQUIPMENT



INCLINE SORTING TABLE (IST) **OPERATION MANUAL**

SERIAL NO. _____ DATE OF MANUFACTURE _____

EQUIPMENT DESCRIPTION

INCLINE SORTING TABLE (IST)

The Incline Sorting Table is a belted sorting device. It is designed for pre-destemmer hand sorting to remove unwanted clusters, vineyard material or MOG (Material Other than Grape) from the picked fruit.

This device can be integrated into the sorting system upstream from the destemmer or deliver fruit to a bin, fermenter, pump or a small press.

The Incline Sorting Table features include: all stainless steel construction for ease of cleaning, a programmable VFD (Variable Frequency Drive) for a complete range of speed control, food-grade internally-driven pulley, raised side walls to contain valuable product and an integrated juice pan for liquid collection.



INSTALLATION AND INITIAL START UP

WARNING

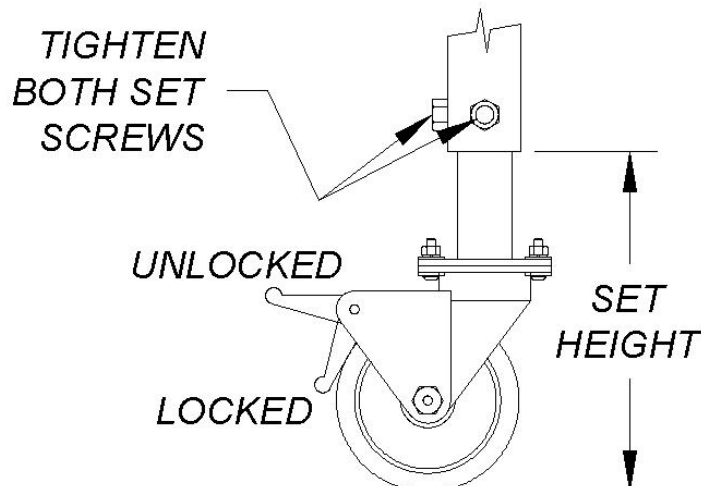
Prior to start up, disconnect the power to the unit and inspect the inside of the control panel for accumulated water or moisture. Ensure that the desiccant packs are dry and that all components are free from electrical short circuit. **NEVER** open the panel with the unit connected to power.

1. Visually inspect the unit for any signs of damage, cracks, fatigue or loose components. Any damaged components should be repaired or replaced immediately. See P&L Specialties' contact information on the last page of this manual.
2. Visually inspect the internal area of the unit for any foreign objects that may have accumulated on the belt surface during shipping. To do so remove the side access panels by lifting up and pulling out. After inspection, replace side covers.

WARNING

Never operate unit unless **ALL** side covers and guards are in place and **ALL** wheels are in the locked position.

3. Position and level the unit to ensure safe and stable operation. Make certain that the caster wheels are all facing the same direction and that the brake mechanisms are all in the locked position.



4. Wet the top surface of the belt with water to lubricate the belt wipers.

WARNING

Prior to start up always inspect the inside of the control panel for accumulated water. Ensure that the components are dry and free from electrical short circuit.

5. Connect the unit to the appropriate power source (voltage/phase).
6. Position the speed control on a low setting of 1 or 2.
7. Ensure that the Emergency Stop Button is pulled out.
8. Press the BELT ON button and then slowly increase the belt speed while observing that the belt is tracking true to the center of the unit (not walking up one side wall or the other).
9. If necessary, adjust the belt tracking (see Belt Adjustment and Tracking section).
10. Allow unit to run freely for 1-5 minutes before loading any product.

WARNING

Never operate unit unless ALL side covers and guards are in place and ALL wheels are in the locked position.

OPERATION**WARNING**

Always ensure that ALL personnel are free and clear of the equipment prior to and during operation. Always power down and let the unit come to full and complete stop then disconnect the power prior to performing and service or maintenance to the unit.

Adjust the speed control as needed to increase or decrease the flow of clusters.

Once the MOG basket fills, carefully slide it out to one side and discard the contents and then reposition the basket at the discharge end of the unit.

SERVICE AND MAINTENANCE

WARNING

Always ensure that ALL personnel are free and clear of the equipment prior to and during operation. Always power down and let the unit come to full and complete stop then disconnect the power prior to performing and service or maintenance to the unit.

WARNING

Never power wash the control panel or emergency stop button station.

Visually inspect the unit daily for any signs of damage, cracks, fatigue or loose components. Any damaged components should be repaired or replaced immediately. See P&L Specialties' contact information on the last page of this manual.

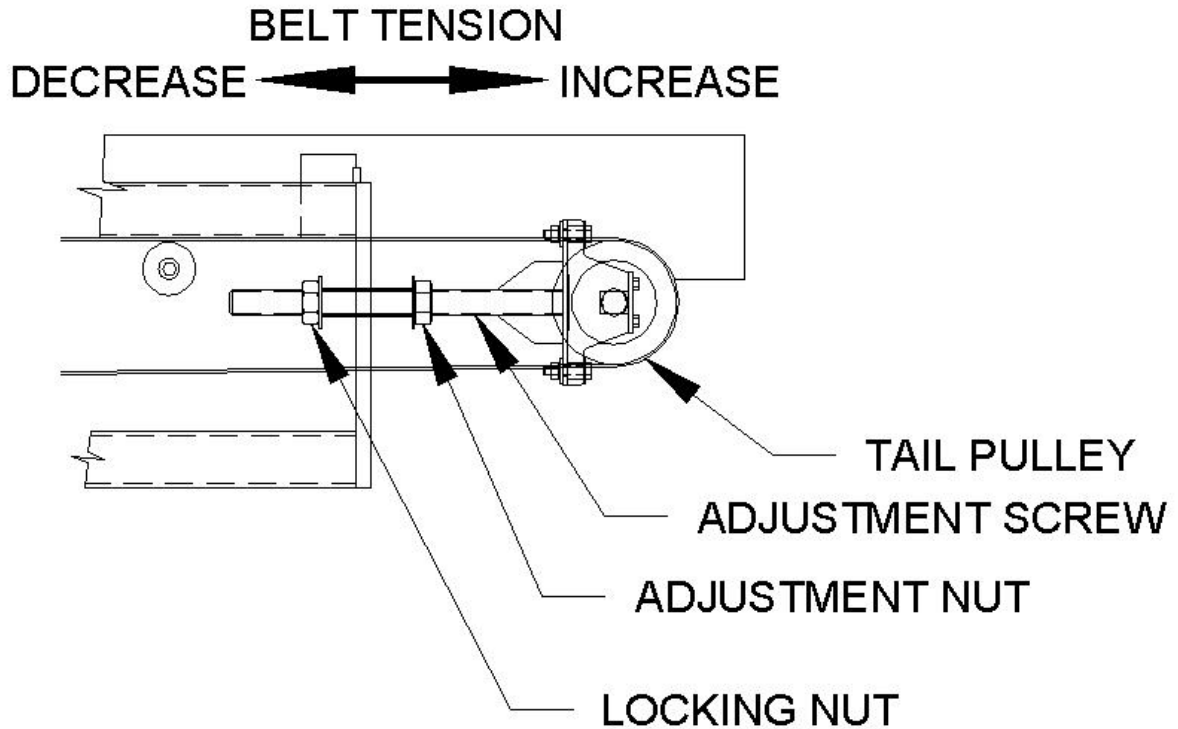
Daily remove any accumulated or loose material from the unit.

Weekly clean the belt surfaces as well as all of the rollers and pulleys. Inspect the belt for any damage or loose lacings. Check the tension of the belt (See Belt Adjustment and Tracking Section). The Motorized Drive Pulley and Tail Pulley are sealed units and require no service or maintenance.

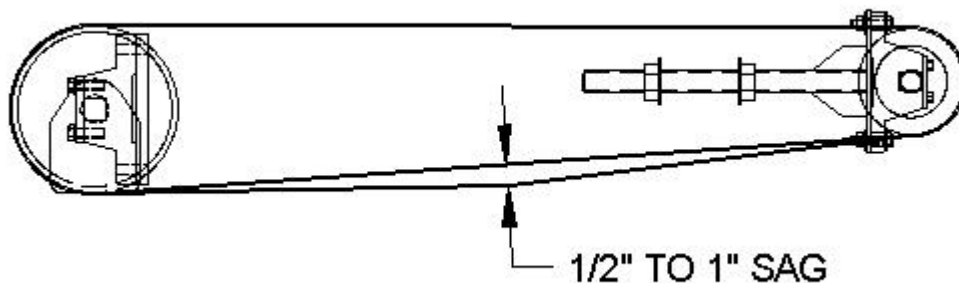
Monthly and at the end of the season it is recommended that the belt tension be released. Also the unit should be covered with a UV-protection drop cloth in order to prolong the life of the belt.

BELT ADJUSTMENT AND TRACKING

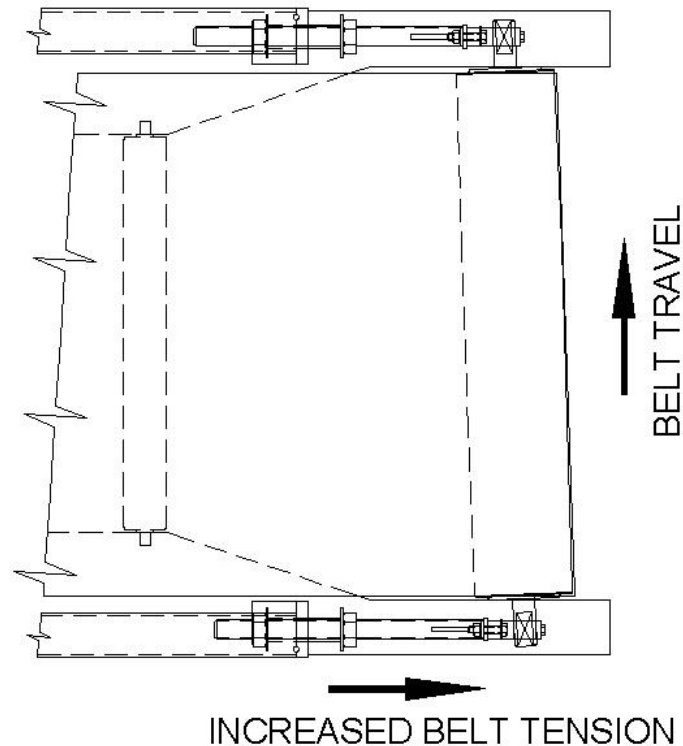
1. The belt adjustment and take-up is accomplished through the use of two (2) adjustment screws at the rear of the unit attached to the tail pulley. Belt adjustment should be made by moving the tail pulley shaft to the rear increasing the belt tension and take-up.



2. With the side covers removed, adjust the belt tension first by tightening the adjuster screws equally until the lower portion of the belt has between $\frac{1}{2}$ " and 1" of sag. At no time is belt sag to be such that the belt comes in contact with any fixed metal surface.



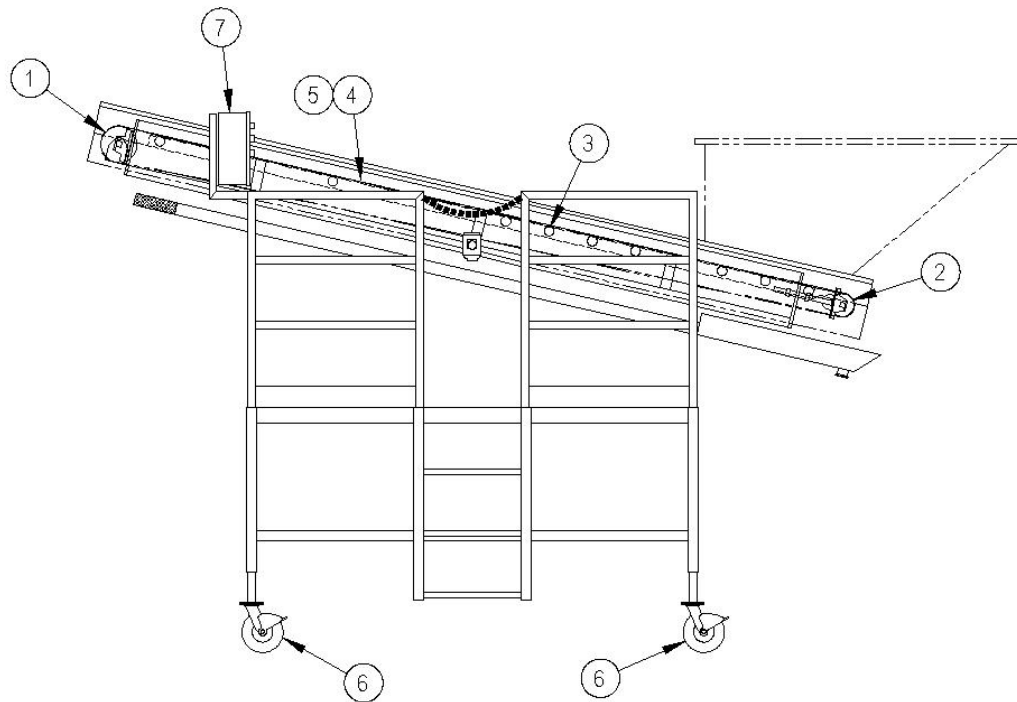
3. Once the proper tension has been achieved, turn the unit on slowly and adjust the tracking as required.
4. The belt tracking adjustments should be made by pulling one side of the pulley shaft towards the front of the conveyor, leaving the other side as is. The belt will move away from the side being pulled. The more that one side of the pulley shaft adjustment is increased over the other side, the more the belt will move away from the longer side.



5. Adjustments should be made in $\frac{1}{4}$ turn increments at a time. Never over tension the belt. Over tensioning will drastically reduce the life of both bearings and belting.
6. Once all adjustments have been achieved, tighten all of the locking nuts. Replace all side covers.

WARNING

Never operate unit unless ALL side covers and guards are in place and ALL wheels are in the locked position.



SPARE PARTS LIST

ITEM 1

Drive Pulley - 73 FPM – dual voltage – 6.5” diameter – 29.53” face - 3 Phase
60 Hz – ¼” White Nitrile Lagging – FDA mild steel drum – Stainless Steel
shaft

ITEM 2

Idler Pulley – 4.39” diameter – 29.24” face – Stainless Steel construction -
#TM113

ITEM 3

Roller - 1.9” diameter – white high impact resistant PVC – 23-13/16” inside
frame – 7/16” Stainless Steel shaft

ITEM 4

Belt – smooth surface – 2 ply – 29-3/8” wide Xx26’-6” long

ITEM 5

Belt lacing with pin – 29-3/8” wide

ITEM 6

Swivel Caster with brake – 8” diameter x 2” wide tread - T304 SST construction with Delrin® Bushing - Polyurethane flat tread 2 Series Tech-Lock brake

ITEM 7

VFD Control Panel with Emergency Stop Button and 15'-0" cable
NEMA 4X



P&L SPECIALTIES

MANUFACTURING THE FINEST STAINLESS STEEL EQUIPMENT

Mailing Address - 1650 Almar Parkway, Santa Rosa, CA 95403

Phone - (707) 573-3141

Fax - (707) 573-3140

Toll Free - (888) 313-7947

E-mail - sales@pnlspecialties.com